

# SHREWSBURY

## PRIMARY CARE NETWORK

### Information Leaflet for Patients—Vol2

#### Shrewsbury Primary Care Network (PCN)

It's over a year since we updated you on where we were at with the developments of the PCN. A huge many changes have occurred within that time so we thought now was a good time to send some further information out!

**Change in Leadership**—Dr Julia Visick and Dr Sarah Harwood have both stepped down as Clinical Directors for the PCN, and Dr Charlotte Hart is now in post as the CD moving forwards.

**Change in membership**—our PCN has grown and we welcome two further practices Knockin and Clive into our fold!

**Launch of the DES**—the government have released the information around the work the PCN needs to deliver over this coming year and all practices have signed up to achieve this.

**Change in Structure**—as the PCN is so large, we have decided to split into three “neighbourhoods” for some project working.

Shrewsbury PCN has a collective patient list size of 124,000 patients across Shrewsbury and surrounding areas.

#### Neighbourhoods:



The Beeches  
Claremont Bank  
Mytton Oak  
Radbrook Green



Belvidere,  
Marden, Marysville  
Riverside,  
Severnfields,  
South Hermitage



Clive, Knockin,  
Pontesbury, Prescott,  
Shawbury, Westbury  
Worthen

# SHREWSBURY

## PRIMARY CARE NETWORK

### Information Leaflet for Patients—Vol2

#### Shrewsbury Primary Care Network (PCN)

It's over a year since we updated you on where we were at with the developments of the PCN. A huge many changes have occurred within that time so we thought now was a good time to send some further information out!

**Change in Leadership**—Dr Julia Visick and Dr Sarah Harwood have both stepped down as Clinical Directors for the PCN, and Dr Charlotte Hart is now in post as the CD moving forwards.

**Change in membership**—our PCN has grown and we welcome two further practices Knockin and Clive into our fold!

**Launch of the DES**—the government have released the information around the work the PCN needs to deliver over this coming year and all practices have signed up to achieve this.

**Change in Structure**—as the PCN is so large, we have decided to split into three “neighbourhoods” for some project working.

Shrewsbury PCN has a collective patient list size of 124,000 patients across Shrewsbury and surrounding areas.

#### Neighbourhoods:



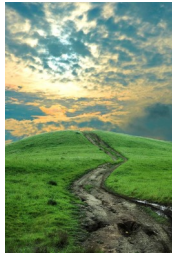
The Beeches  
Claremont Bank  
Mytton Oak  
Radbrook Green



Belvidere,  
Marden, Marysville  
Riverside,  
Severnfields,  
South Hermitage



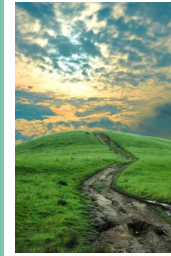
Clive, Knockin,  
Pontesbury, Prescott,  
Shawbury, Westbury  
Worthen



## Pathways and Aims:

- Enhanced Health in Care Homes
- Structured Medication reviews and optimisation
- Anticipatory Care
- Personalised Care
- Supporting early cancer diagnosis

There is no specific funding for practices to deliver these projects, but money has been made available for practices to employ additional clinical staff to help achieve these aims e.g. pharmacists, physiotherapists, social prescribers. Over the next few months this is what we'll be focussing on.



## Pathways and Aims:

- Enhanced Health in Care Homes
- Structured Medication reviews and optimisation
- Anticipatory Care
- Personalised Care
- Supporting early cancer diagnosis

There is no specific funding for practices to deliver these projects, but money has been made available for practices to employ additional clinical staff to help achieve these aims e.g. pharmacists, physiotherapists, social prescribers. Over the next few months this is what we'll be focussing on.

### Patient Involvement in decision making

We will be working with the local patient group, and our own individual practice PPG's on the best way to involve patients in the progression of projects and pathways that the PCN is developing. With the two local CCG's merging, the development of the PCN's, and the last few months coping with Covid we are conscious that safe patient developments has and we are looking to involvement in not been a priority address this shortly.



### Patient Involvement in decision making

We will be working with the local patient group, and our own individual practice PPG's on the best way to involve patients in the progression of projects and pathways that the PCN is developing. With the two local CCG's merging, the development of the PCN's, and the last few months coping with Covid we are conscious that safe patient developments has and we are looking to involvement in not been a priority address this shortly.



### Covid Update

The local hot hub at the football club was a huge success and enabled Covid+ patients to be seen and treated, whilst enabling all local practices to remain open and to continue normal practice so far as possible. If Covid cases spike locally in the future there are plans in place, together with the CCG and Public Health, to potentially reopen the hot hub but possibly in a different central location.



### Covid Update

The local hot hub at the football club was a huge success and enabled Covid+ patients to be seen and treated, whilst enabling all local practices to remain open and to continue normal practice so far as possible. If Covid cases spike locally in the future there are plans in place, together with the CCG and Public Health, to potentially reopen the hot hub but possibly in a different central location.

For more information visit - [www.shrewsburypcn.co.uk](http://www.shrewsburypcn.co.uk)

For more information visit - [www.shrewsburypcn.co.uk](http://www.shrewsburypcn.co.uk)